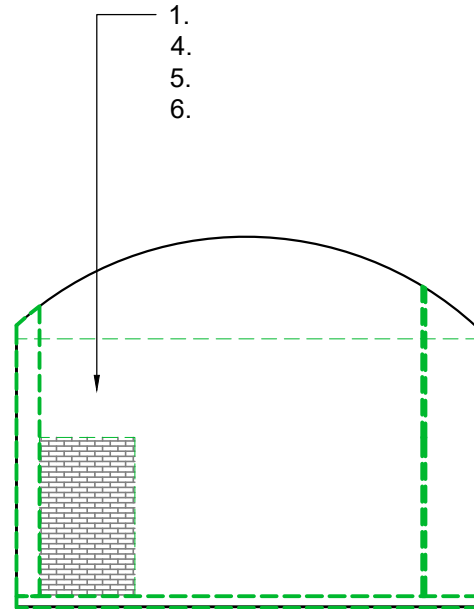
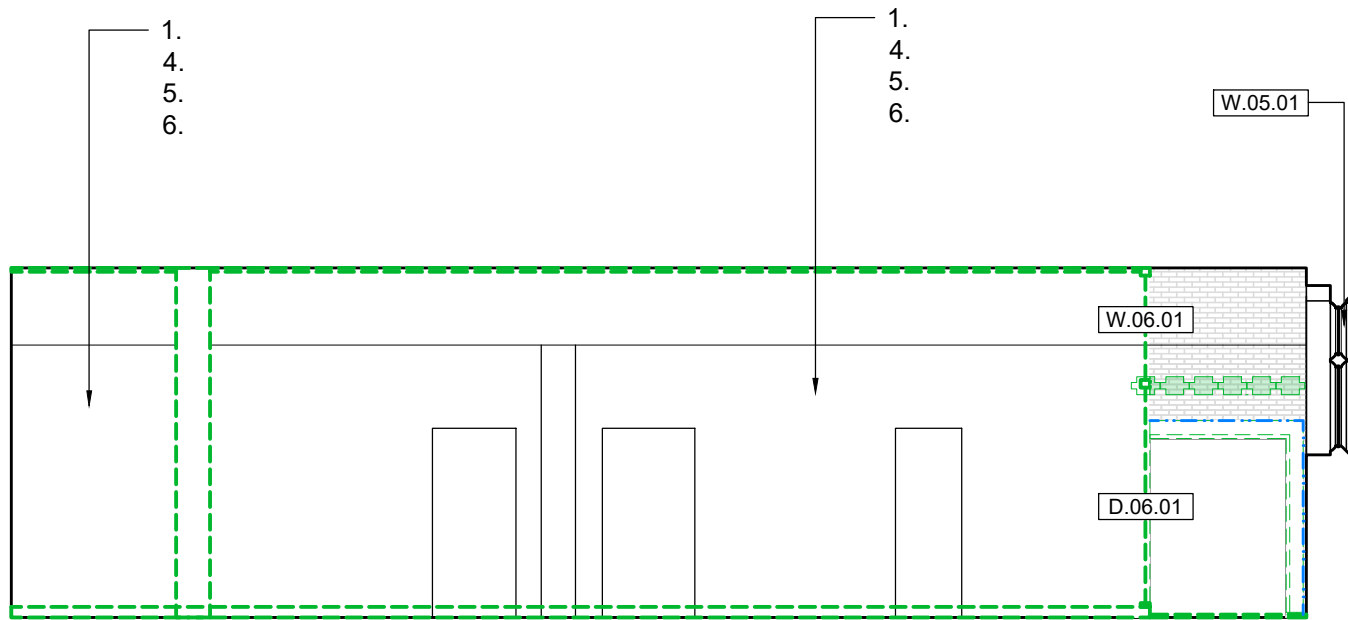


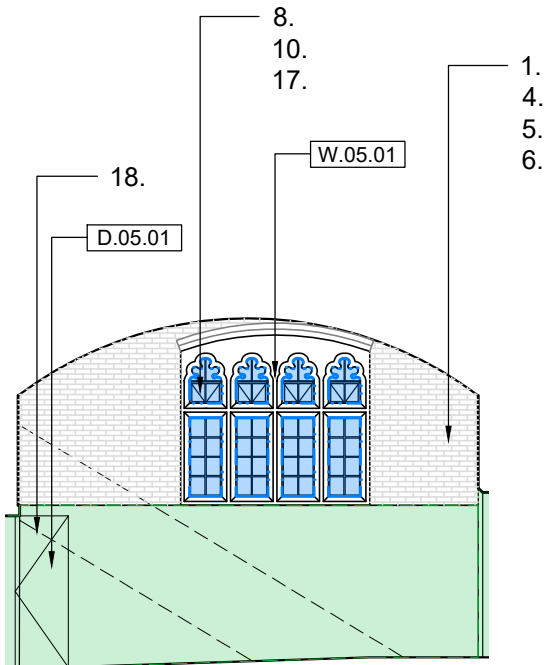
1 Tower Bridge Arch 02 - North Internal Elevation  
2220 1:100 @ A3



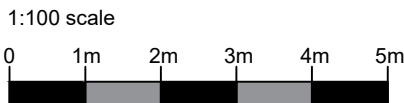
2 Tower Bridge Arch 02 - East Internal Elevation  
2220 1:100 @ A3



3 Tower Bridge Arch 02 - South Internal Elevation  
2220 1:100 @ A3



4 Tower Bridge Arch 02 - West Internal Elevation  
2220 1:100 @ A3



To be read in conjunction with  
Jamie Fobert Architects' information

#### Key (1:50 Elevations)

- Modern fittings removed and finishes sensitively stripped back to reveal bare brickwork. Previous fixings to be made good, generally in mortar to match existing. Subject to mortar analysis during strip-out as specification section C41.
- Fabric seat around Reveller Arch window to be removed and stone cill made good as specification section C41.
- Modern grilles within existing window openings to be removed and replaced with new steel grilles as specification section L10.650.
- Salt deposits, loose paintwork, slurry coats, mastic and adhesives to be removed from surface of brickwork using soft brushing and putty knife with warm soapy water as specification section C40.
- Existing brickwork generally to be retained. Any bricks suffering severe degradation or damage to be carefully cut out and replaced as specification section C41. Scope and brickwork specification to be agreed with HRP, HE and Conservation Officer following strip-out.
- Cementitious mortar to brickwork to be carefully removed and replaced with lime mortar as specification section C41.820 (to be determined through analysis) where cementitious mortar is damaged in itself, or is causing accelerated decay of adjacent bricks.
- Historic glazed brickwork to be repointed with lime mortar to specification determined through mortar analysis during strip-out as specification section C41.820.
- Portland stonework to be repaired and repointed as specification section C41.
- Mortar repairs undertaken to damaged stone area as specification section C41.520.
- Missing/ damaged Portland stonework to be replaced to match existing as specification section C41.320.
- Missing/ damaged Kentish ragstone to be replaced to match existing as specification section C41.321.
- Modern grille/ ductwork within wall to be removed and stonework reinstated to match existing as specification section C41.
- Existing paintwork to stone window mullions and transoms to be treated with a paint remover, subject to paint sampling and analysis as specification section C40.232. Significant historic paint stratigraphy is to be retained where it exists.
- Historic window sensitively overhauled to ensure effective operation. Where modern obscured glass has been installed this is to be replaced with clear single glazed handmade crown glass fixed with linseed oil putty as specification section L40.210.
- Window to be carefully removed and stored for future reuse. Rebated stone surrounds to be restored as specification section C41, and fitted with new bespoke steel frames as specification section L10.315. New frames and grilles to be fitted to existing stone rebate with minimal change to historic fabric. Grilles will take inspiration from historic examples as specification section L10.650.
- Window paint to be stripped from metalwork and frames redecorated in alkyd gloss on metal primers as specification section M60.
- New metal window frames and casements to be installed to match surrounding historic examples, with single glazed handmade crown glass fixed with linseed oil putty as specification section L10.315.
- Location of Tower Bridge iron anchor cable. Scope of ironwork repairs and representation of the historic ironwork cable to be determined following strip-out as specification section C41. Scheme of paintwork to be determined in consultation with City Bridge Foundation/ City of London Corporation as specification section M60.
- New painted timber door and door frame to match details and proportions of existing examples as specification section L20.215 and 330.
- Painted timber door to be rubbed back, refurbished, and painted as specification section C51 and M60.
- Historic door to be rubbed back, refurbished and finished and retained in-situ as specification section C51.740 and M60.
- New ironmongery fitted as ironmongery schedule.
- Steel frames removed and new timber doors and door frame fitted within existing aperture as specification section L20.215 and 330.
- Modern internal lobby to be removed and replaced with an integrated joinery cupboard to JFA drawings and specification. Historic external door and surround to be retained in-situ and repaired as specification section C51.740.
- New opening created in historic brickwork wall formed of steel box frames and precast concrete lintels. New openings to be lined internally (refer to JFA and structural engineer's drawings and specifications).
- Modern grille within window removed and stone surround repaired as specification section C41. New grille inserted as specification section L10.650.
- Automated door opener/ closer. Refer to ironmongery schedule.

#### Notes:

Drawings are based on survey data and may not accurately represent what is physically present.

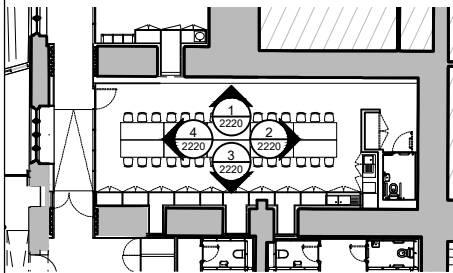
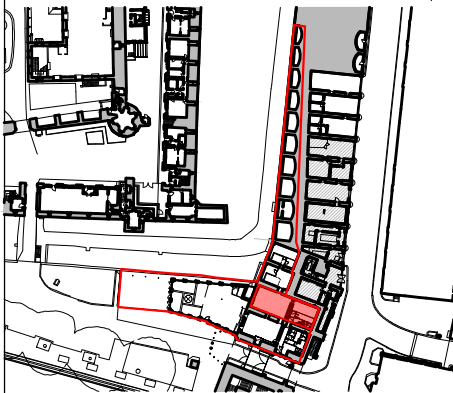
Do not scale from this drawing. All dimensions are to be verified on site before proceeding with the work.

All dimensions are in millimetres unless noted otherwise.

Purcell shall be notified in writing of any discrepancies.

All digital information within this DWG format file is the copyright of Purcell Architecture Limited and is for information purposes only. No digital information maybe reused or reproduced by any party for any purpose without written permission.

#### Key Plan not to scale



#### Key

- Not in Scope
- Refer to Jamie Fobert Architects' information for further guidance
- Refer to Purcell's information for further guidance

P05	17.10.2025	RP	KSH	TENDER DRAFT
P04	18.07.2025	KSH	JMcK	STAGE 4 - FOR APPROVAL
P03	27.06.2025	KSH	JMcK	STAGE 4B - FOR INFORMATION
P02	13.06.2025	KSH	JMcK	STAGE 4B - FOR INFORMATION
P01	08.04.2025	KSH	JMcK	FOR INFORMATION
REV	DATE	BY	CHK	DESCRIPTION

CLIENT	Historic Royal Palaces
PROJECT	Tower of London Education Facilities
JOB NUMBER	243442
TITLE	Conservation Repairs & Works to Historic Fabric Tower Bridge Arch 02 Internal Elevations

SIZE	SCALE
A3L	1:100 @ A3
REV	SUITABILITY/REASON FOR ISSUE
P05	S4 - FOR APPROVAL
DRAWING NUMBER	243442-PUR-01-00-DR-A-2220

PURCELL® IS THE REGISTERED TRADE NAME FOR PURCELL ARCHITECTURE LTD AND ALL SUBSIDIARY COMPANIES AND IS REGISTERED IN THE UNITED KINGDOM, EUROPEAN UNION, HONG KONG, CHINA AND AUSTRALIA.  
© PURCELL 2025. www.purcella.com